

1/2" BSP (x4)
Cone for O-ring

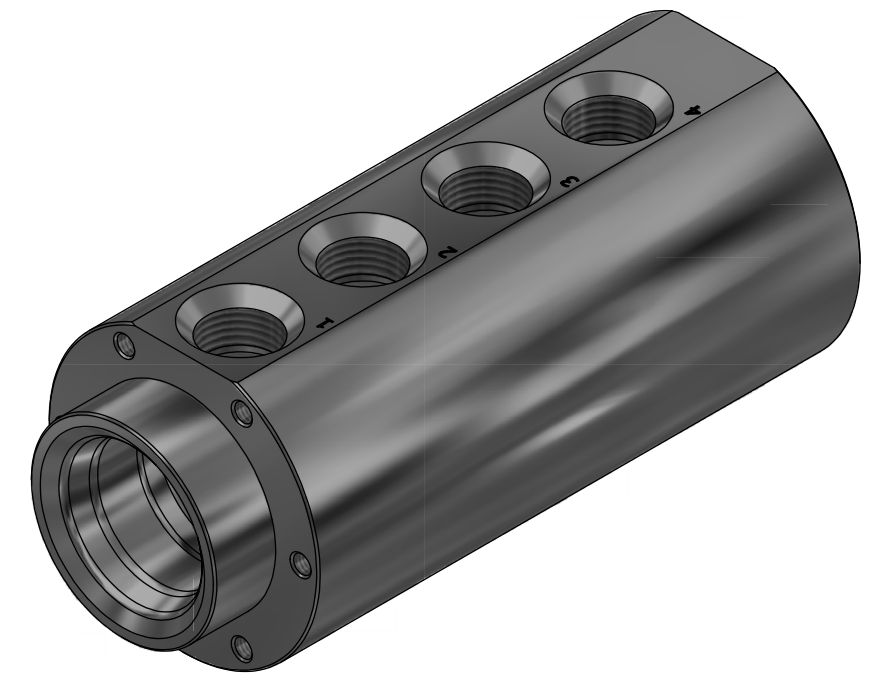
NOTE: 1
DESIGN CODE:
API 17H/6A

NOTE: 2
TECHNICAL CLASSIFICATION:
Article Type: 001-Hot Stabs
Main Group: 1.01. Ø35 Hot Stab
Intermediate Group: 1.1.02. Receptacle
Sub Group: 1.1.2.04. Quad

NOTE: 3
INTERFACE INFORMATION:
Pressure Rating Bar: 690
Design Water Depth: N/A
Material: S32750 SUPER DUPLEX
Weight: 4,1 kg
Volume: 0,52 dm³
Submerged Weight: 3,53 kg
Surface Area: 694 cm²
Hydraulic: BSP 1/2"
Mechanical: 6xM6@PCD 66
Electrical: N/A
Com. & Protocol: N/A

NOTE: 4
ADDITIONAL INFORMATION:
The Ø35mm Blue Logic Hot Stab is made according to API 17H. This Hot Stab is in general designed for flow up to approx 25 liters pr. munute. We have pressure rating up to PSI 20K or 1380 Bar. The Hot Stab system can also be fitted with an lock-system.

Other hydraulic port interface can be delivered on customers request.



08	2.10.2025	9-IFU (Issued for Use)	new dimensions	WTJ	HNJ	WTJ
07	25.4.2014	9-IFU (Issued for Use)		WTJ	HNJ	WTJ
06	7.2.2013	7-IFC (Issued for Construction)		LAE	LGH	LAE
05	25.11.2011	Issued for Construction		LGH	NA	NA
Rev.	Date	Reason for issue	Revision change	Made	Chk'd	Appr.

BLUE LOGIC

This Drawing is the Property of Blue Logic AS © and must Not be Loaned, Reproduced or Transferred to others without written Permission

Unless Noted Otherwise:
Dim. Tol: NS-ISO 2768-1N/A
Roughness: RaN/A
Fillet Rad: Corner Rmax: N/A

Dwg Scale: NTS
Dwg Proj:
Dwg Format: A3
Break Edges: (R. Alt. 45°) R= 0,1-0,5

Drawing title: Ø35 QP Rec 10k Interv BSP 1/2"
Drawing number: PA0095

Rev: 08